

### Specification

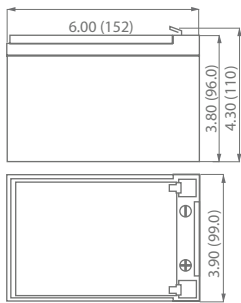
<b>Nominal Voltage</b>	12 volts		
<b>Nominal Capacity</b>	77° F (25° C)		
20-hr. (0.60A)	12.0 Ah		
10-hr. (1.12A)	11.2 Ah		
5-hr. (2.04A)	10.2 Ah		
1-hr. (7.20A)	7.20 Ah		
<b>Approximate Weight</b>	7.14 lbs (3.24 kg)		
<b>Internal Resistance (approx.)</b>	14mΩ		
<b>Shelf Life</b> (% of normal capacity at 68° F (20° C))			
3 Months	6 Months	12 Months	
91%	83%	64%	
<b>Temperature Dependency of Capacity</b>	(20 hour rate)		
104° F (40° C)	77° F (25° C)	32° F (0° C)	5° F (-15° C)
102%	100%	85%	65%
<b>AGM Operational Temperature</b>			
Charge	32° F to 104° F (0° C to 40° C)		
Discharge	5° F to 113° F (-15° C to 45° C)		
<b>AGM Storage Temperature</b>	5° F to 104° F (-15° C to 40° C)		



Due to continuous improvements to our products, product may vary slightly from depiction.

<b>Charge Method</b> (Constant Voltage)		
<b>Cycle Use</b> (Repeating Use)		
Initial Current	3.6 A or smaller	
Control Voltage	14.6-14.8 V	
<b>Float Use</b>		
Control Voltage	13.6-13.8 V	

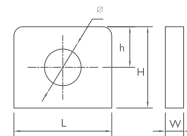
### Physical Dimensions: in (mm)



**L:** 6.00 in (152 mm)  
**W:** 3.90 in (99.0 mm)  
**H:** 3.80 in (96.0 mm)  
**TH:** 4.30 in (110 mm)  
 Tolerances are +/- 0.04 in. (+/- 1mm) and +/- 0.08 in. (+/- 2mm) for height dimensions. All data subject to change without notice.

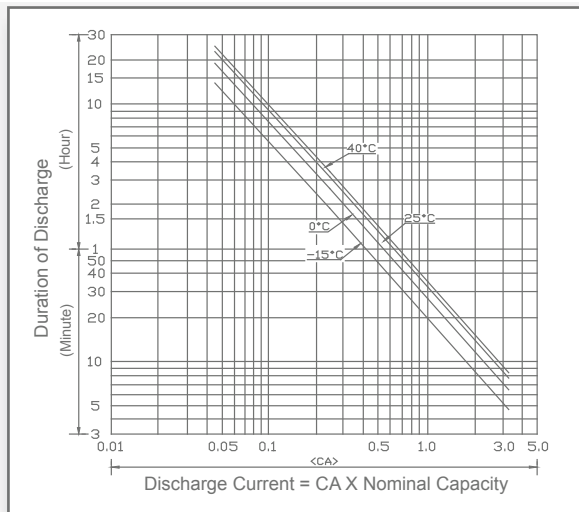
### Terminals

#### T Series (Tab Terminal)

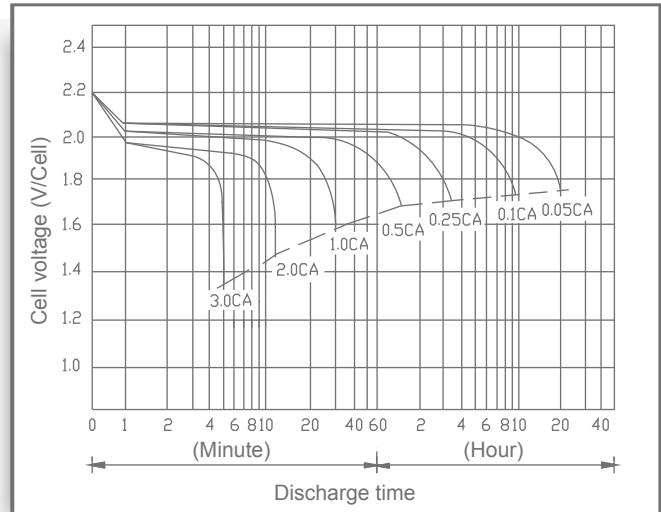


Dimension Type	L	W	H	h	ø
<b>T5</b>	12.0 mm 0.47 in	3.00 mm 0.12 in	1.4 mm 0.55 in	5.0 mm 0.20 in	5.9 mm 0.23 in

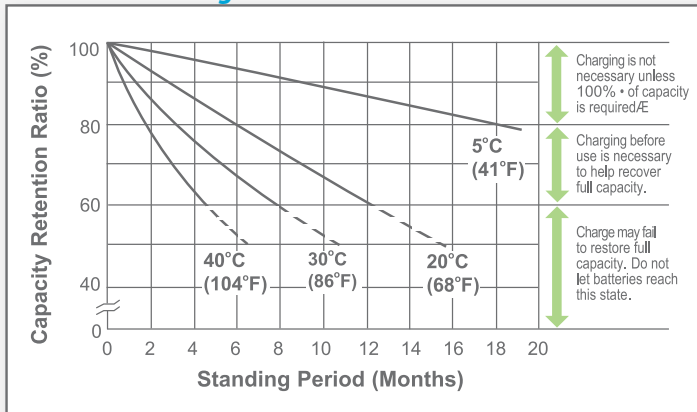
### Discharge Time vs. Discharge Current



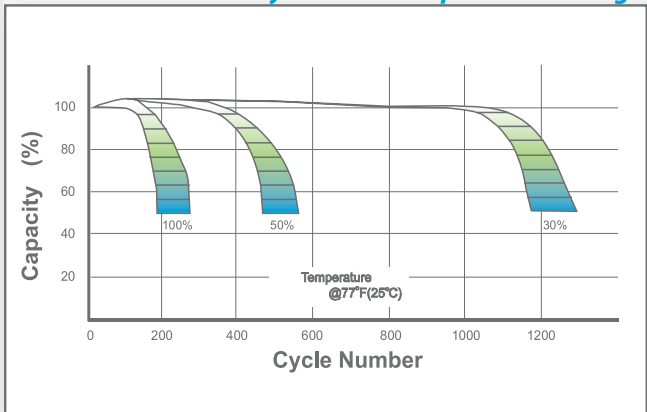
### Discharge Characteristics



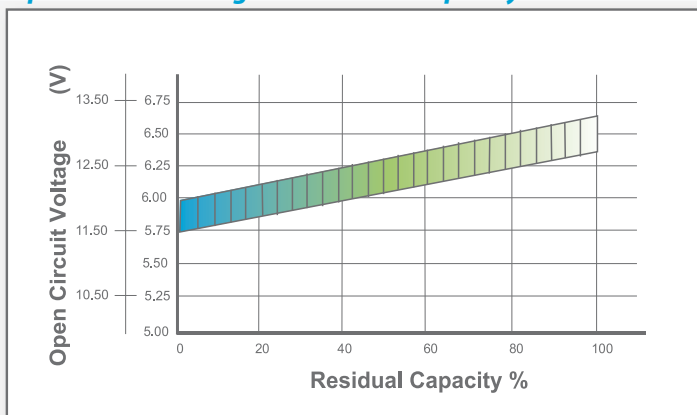
### Shelf Life & Storage



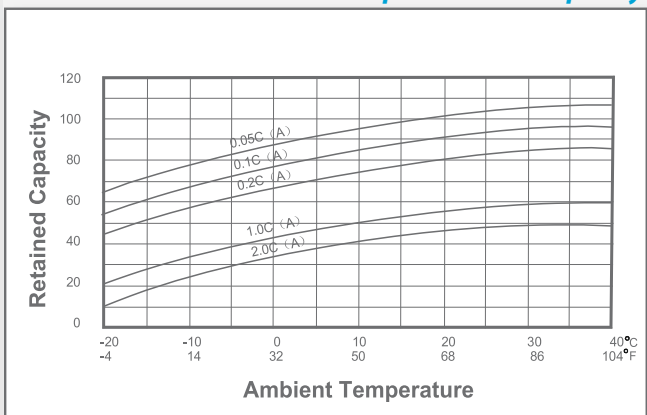
### Cycle Life vs Depth of Discharge



### Open Circuit Voltage vs Residual Capacity



### Effect of Temperature on Capacity



### Charge Current & Final Discharge Voltage

Application	Charge Voltage(V/Cell)			Max.Charge Current	Final Discharge Voltage V/Cell	1.75	1.70	1.60	1.30
	Temperature	Set Point	Allowable Range						
Cycle Use	25°C(77°F)	2.45	2.40-2.50	0.30°C	Discharge Current(A)	0.2C<(A)	0.2C<(A)<0.5C	0.5C<(A)<1.0C	(A)>1.0C
Standby	25°C(77°F)	2.30	2.27-2.30						



ISO 9001

Let UPG Power Your Life.

www.upgi.com